



TELONIC BERKELEY INC.

Vista, California

TUNABLE BANDPASS FILTER

IN SMALL

SURFACE MOUNT MODULE



Contents

- 1. Specifications**
- 2. Package Outline**
- 3. Environment Operation**
- 4. SPI 3- wire Serial Interface Control**
- 5. Tunable Filter Plots**
 - 1. 2000 – 3000 MHz**
 - 2. 1500 – 2000 MHz**
 - 3. 1000 – 1500 MHz**
 - 4. 400 – 800 MHz**
 - 5. 200 – 400 MHz**
 - 6. 90 – 200 MHz**
 - 7. 30 – 90 MHz**

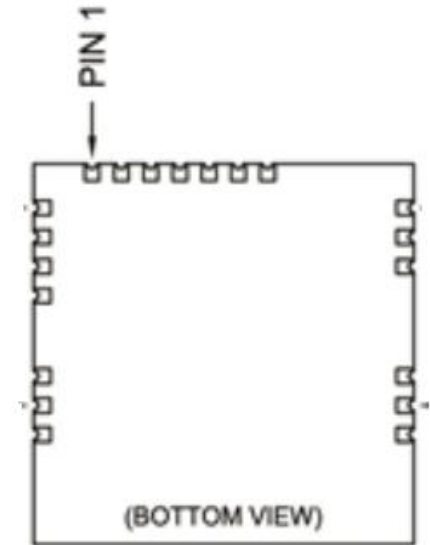
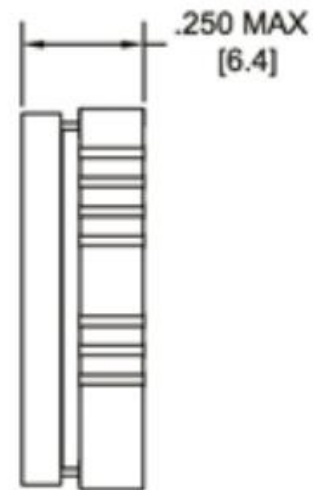
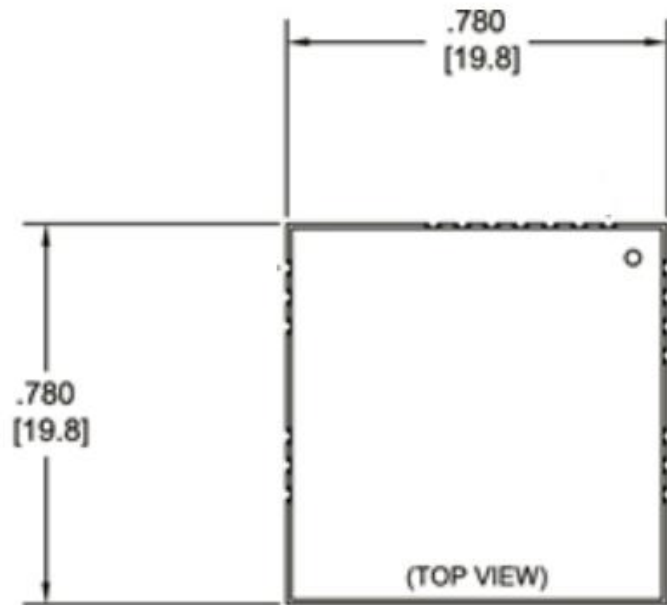


Specifications

- **Frequency Coverage : 30 MHz to 3 GHz**
 - Filter tuning ranges are available based on popular communication bands covering 30 MHz to 3 GHz
 - Custom design tuning ranges can cover multiple octaves
- **Inband RF Power handling : + 10 dBm**
- **Inband OIP3 : 20 dBm**
- **Inband OIP2 : 70 dBm**
- **Tuning control : SPI**
- **Tuning speed : in μ S**
- **DC power supply : 3 - 5 VDC and 20 mA max**
- **Size : 0.78”(19.8mm) x 0.78”(19.8mm) x 0.25”(6.4mm)**



Package Outline





Environment Operation

Table 3. RECOMENDED OPERATING CONDITIONS

Symbol	Parameter	Rating			Unit
		Min	Typ	Max	
T _{AMB_OP}	Operating Ambient Temperature	-30	-	+85	°C
T _{J_OP}	Operating Junction Temperature	-30	-	+125	°C
AVDD	Analog Supply Voltage	2.3	-	5.5	V
VIO	IO Reference Supply Voltage	1.1	-	3.0	V



SPI 3-wire Serial Interface Control

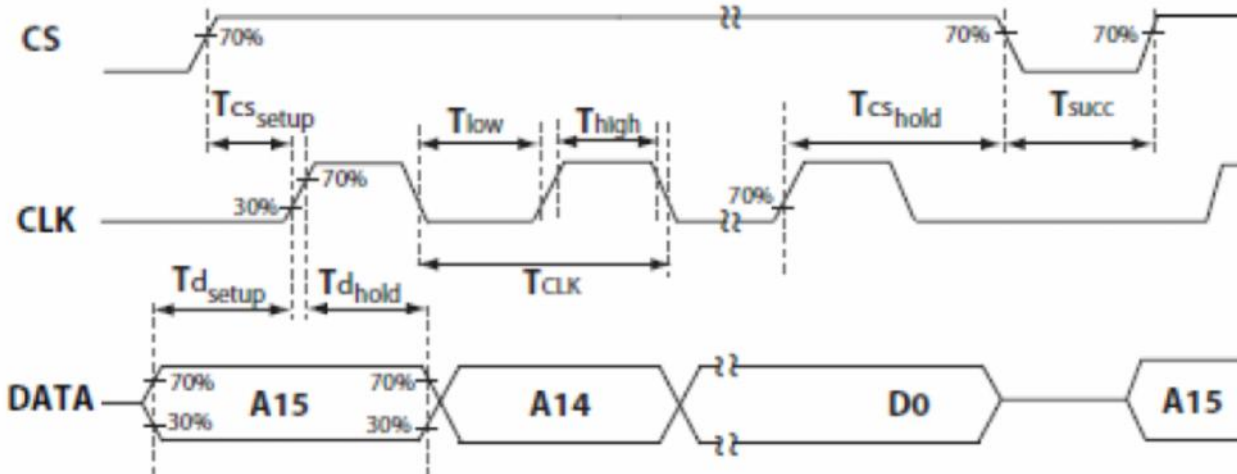
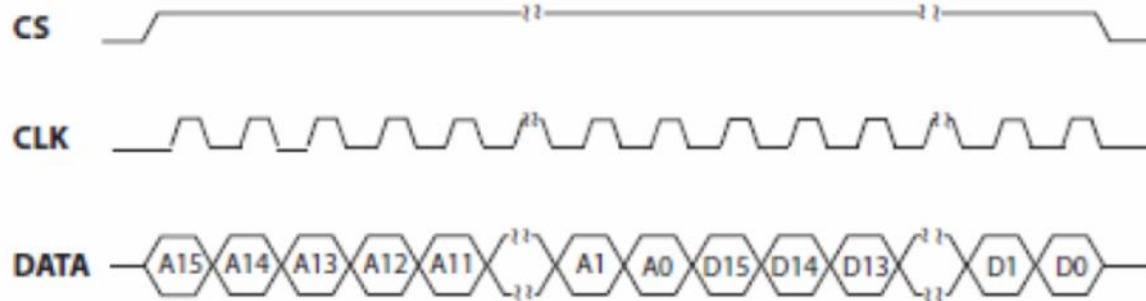
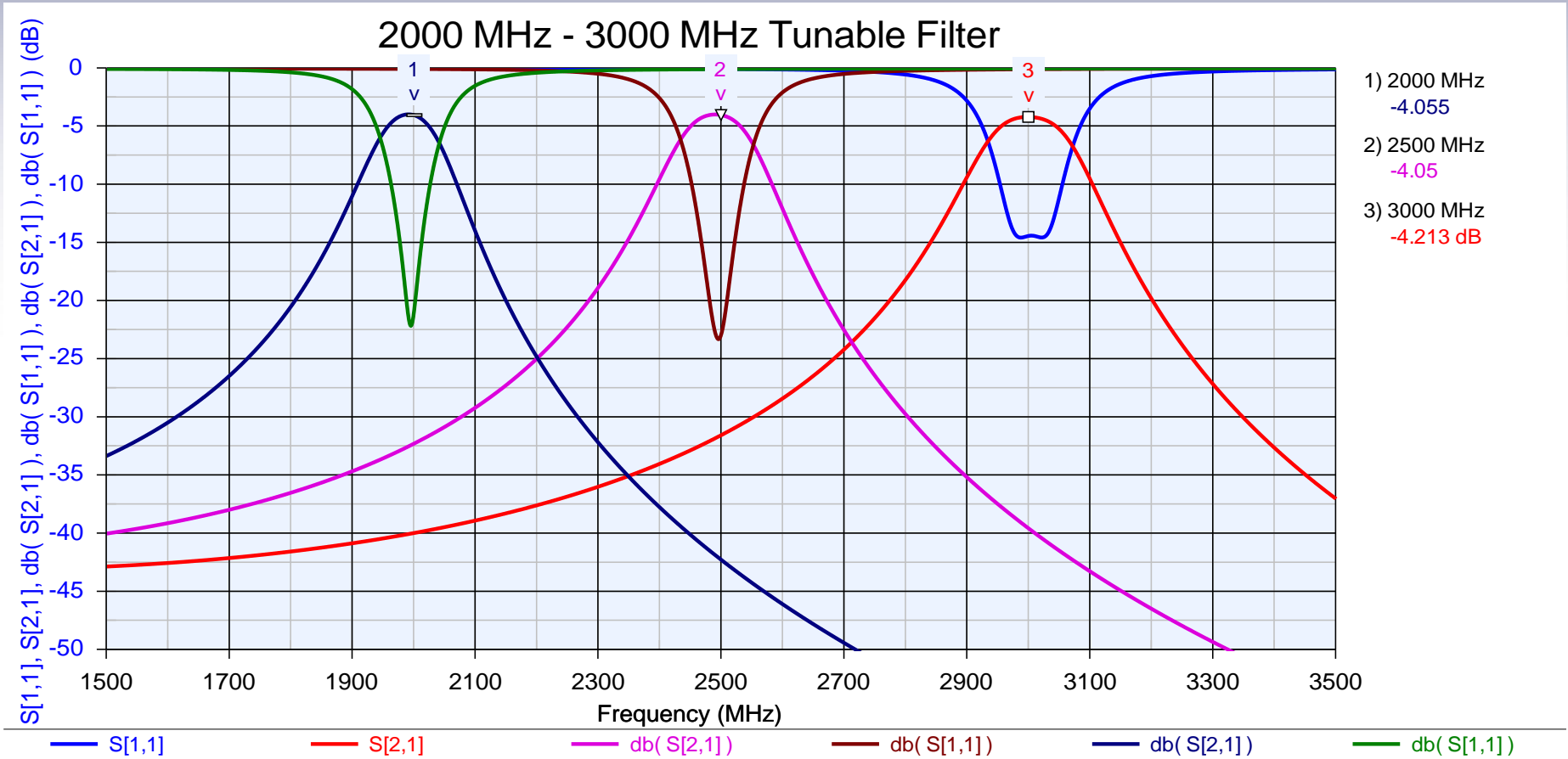


Figure 8. SPI 3-wire Serial Interface Signal Timing

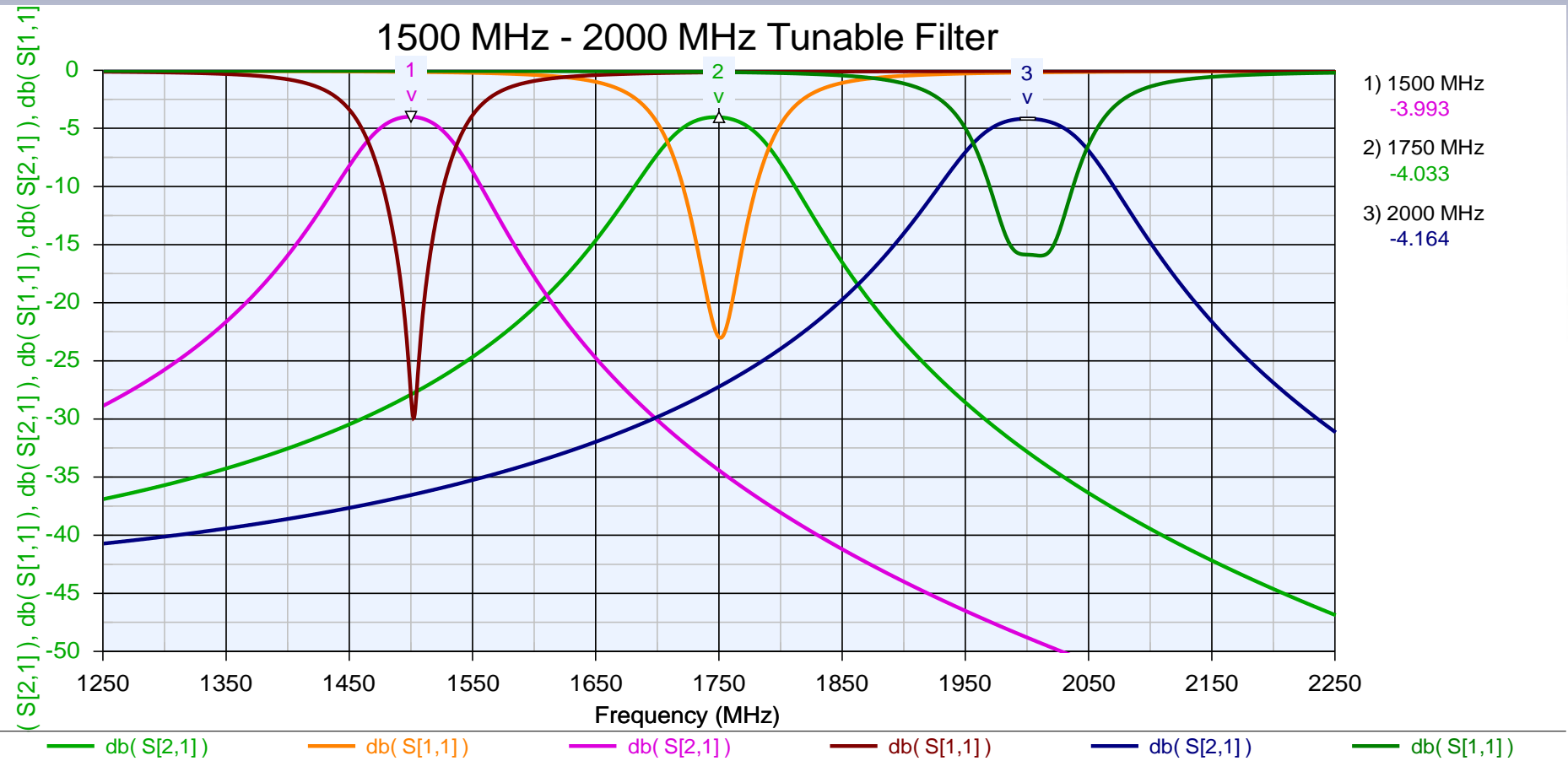


2000-3000 MHz Tunable Filter



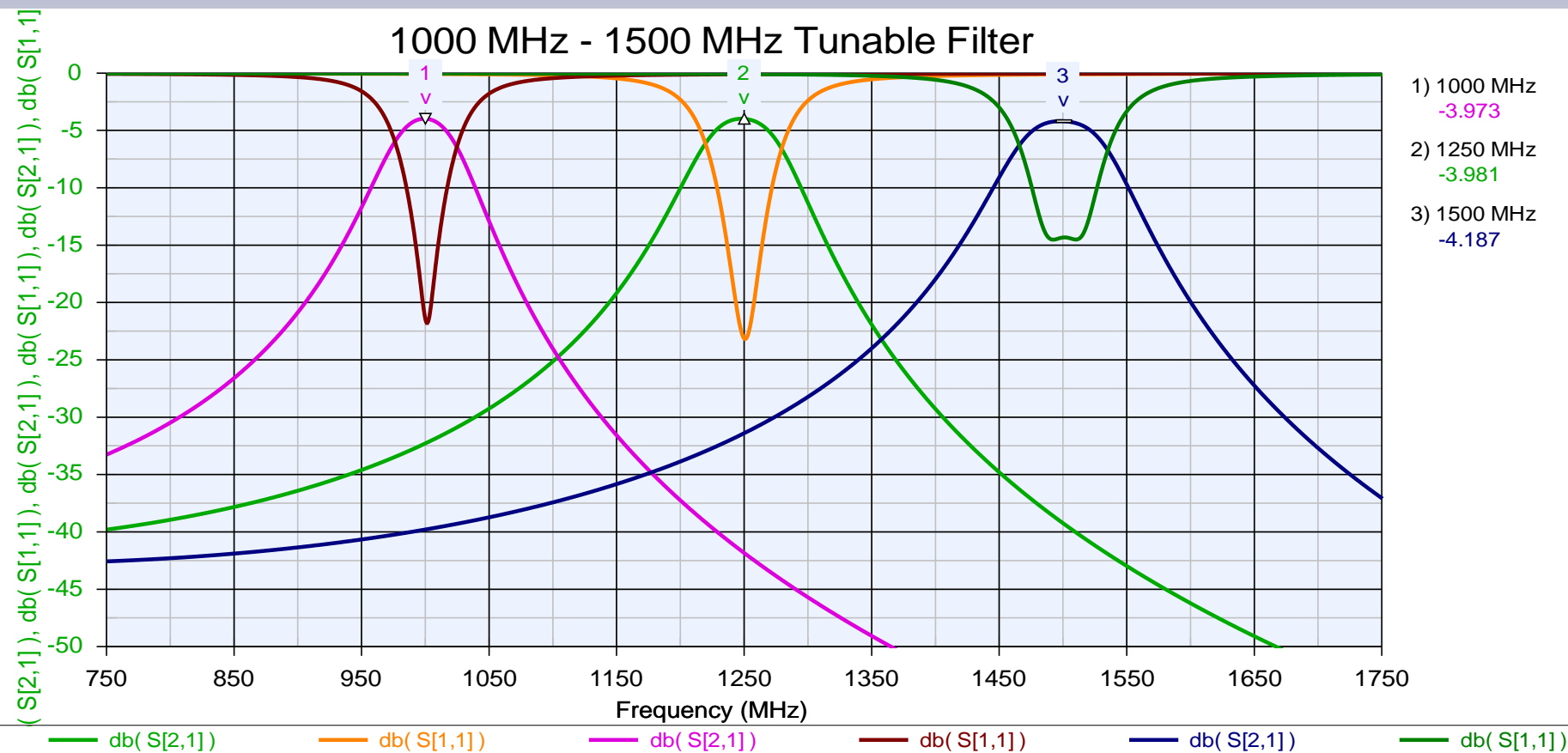


1500-2000 MHz Tunable Filter



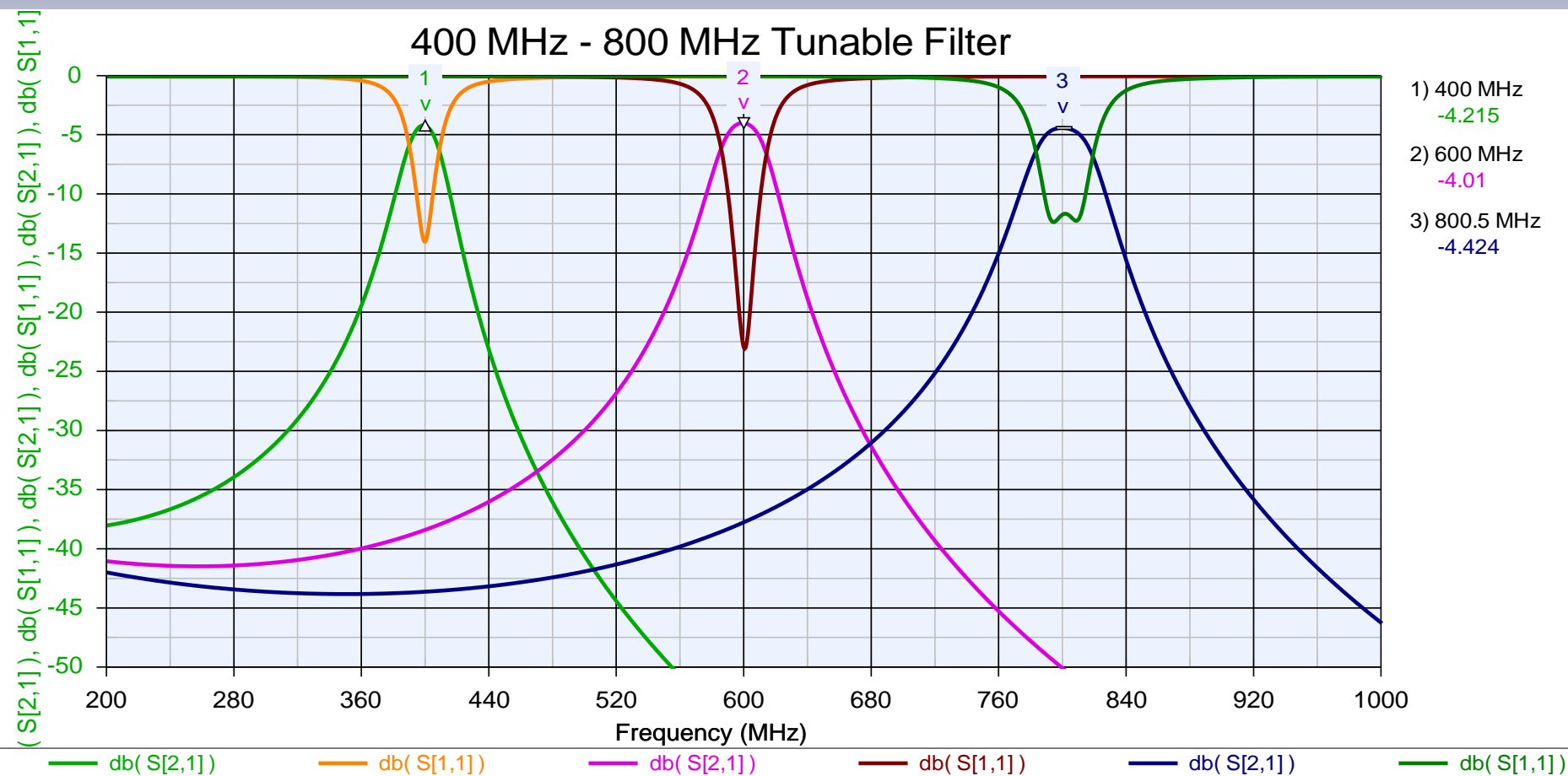


1000-1500 MHz Tunable Filter



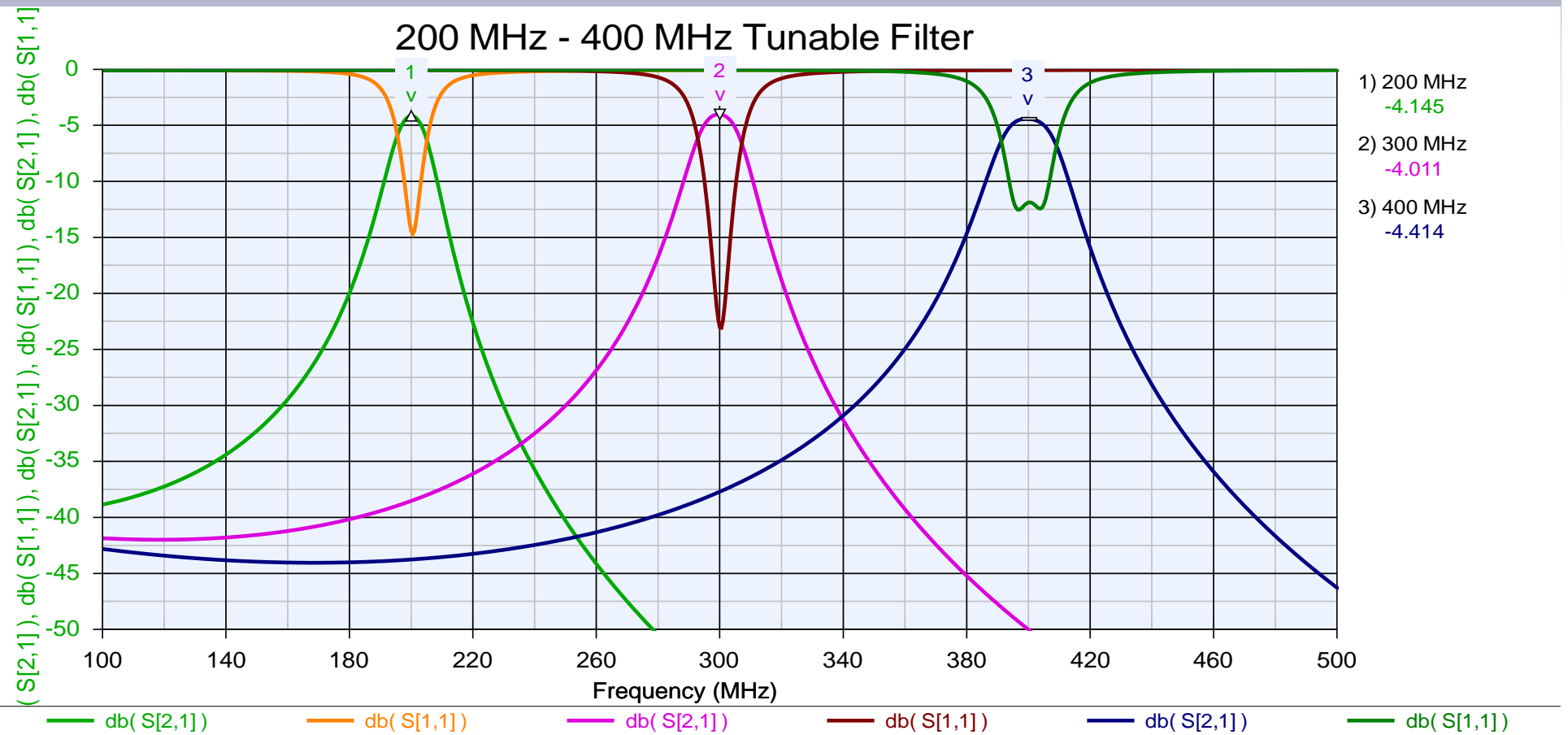


400-800 MHz Tunable Filter



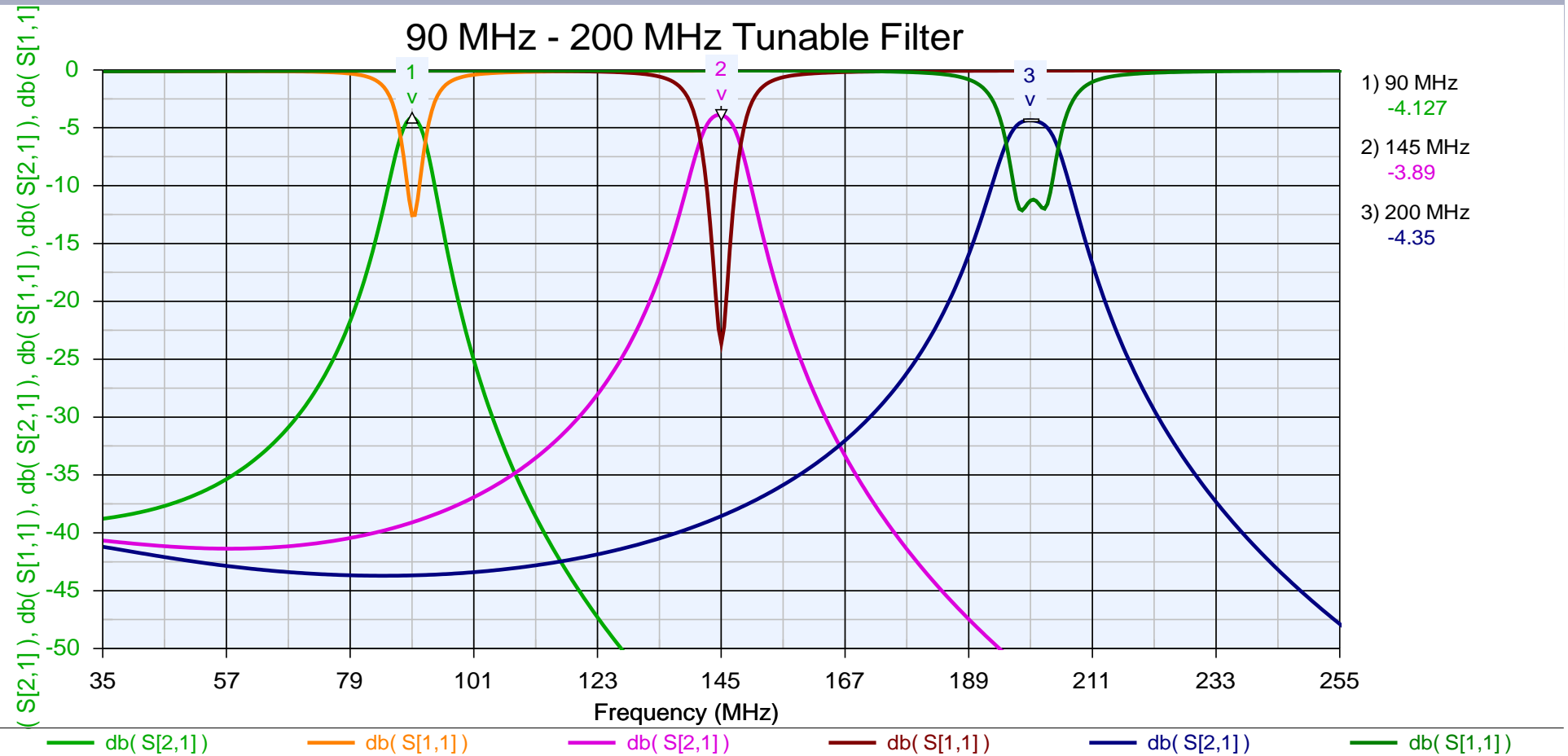


200 - 400 MHz Tunable Filter



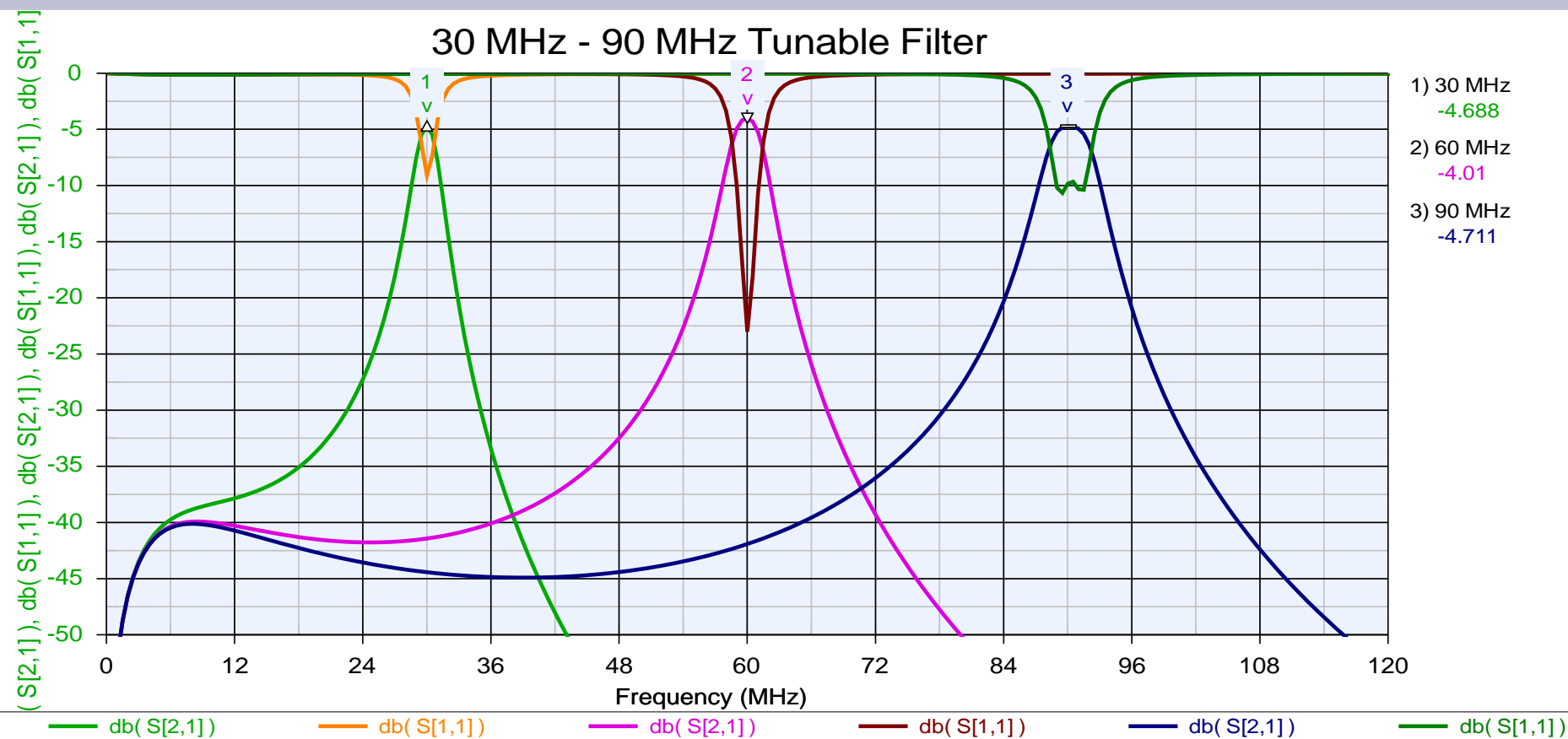


90-200 MHz Tunable Filter





30 - 90 MHz Tunable Filter





For more details :
Please contact Kanak Vaghela
@ 760-473-4811
or email at kanak@telonicberkeley.com

" We Pass & Block Frequency "